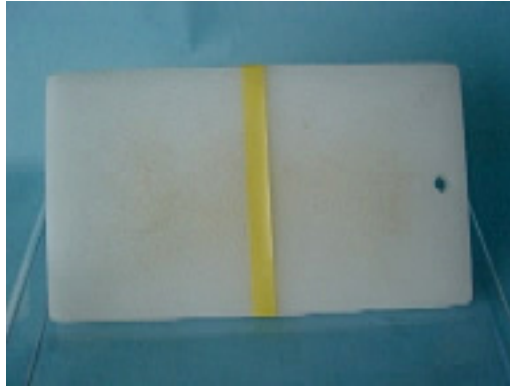


▶ Sanitization Test of Food Stamps for Cutting Board

After rinsing by SAIW (Super Alkaline Ionized Water), no bacterial colonies were detected in the food stamp.



Cutting board before rinsing

Test conditions

Room temperature --- approx. 18°C

Water temperature --- approx. 12°C

SAIW --- pH12.5

Results of Test with Tap Water

Spray tap water

Obtain food stamp after 30 seconds



Results of Test with SAIW

Spray SAIW

Obtain food stamp after 30 seconds



▶ Detergency Test for Watch Band

Stains in small gaps can be washed out instantly with the amazing infiltration power of SAIW (Super Alkaline Ionized Water).

Wash with SAIW

Soak in SAIW

Washing in SAIW

Soaking in SAIW for 20 seconds

Washing in SAIW

Soak in SAIW for 20 seconds, and then shake lightly 10 times



▶ Comparison Test for Graffiti with Solvent Ink

Wash with tap water

Spray tap water 3 times

→ Condition of solvent ink has not changed



Wash with SAIW

Spray SAIW 3 times

→ Solvent ink came off and drained without scraping



▶ Comparison Test for Cleaning of Wall Covering

Kitchen : stains of splashed oil
Oil floats out after spraying SAIW



Spray Tap Water

Test Conditions
Room temperature
---approx. 18°C
Water temperature
---approx. 12°C
SAIW---pH12.5

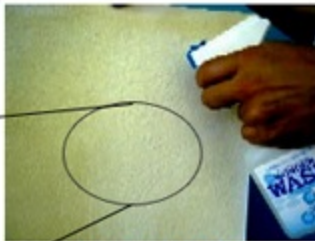


Spray SAIW

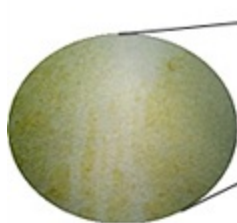
Wall Covering with Cigarette Smoke Stains
Tar (Nicotine) floats out after spraying SAIW



Spray Tap Water



Spray SAIW



▶ Emulsification Scattering Test



Comparison of Grease Emulsification with SAIW and tap water

Test conditions

Room temperature --- approx. 18°C

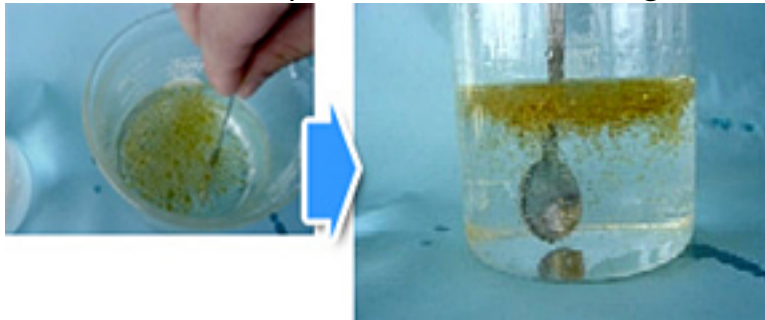
Water temperature --- approx. 12°C

SAIW --- pH12.5

Drop 15ml of esculent sesame oil

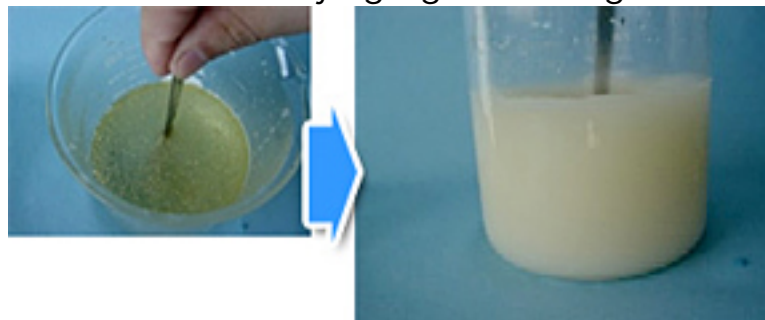
Drop into tap water

Sesame oil is separated even after agitation



Drop into SAIW

Started emulsifying right after agitation



▶ Detergency Test for Mini-Tomatoes

Photos of comparison test with mini-tomatoes soaked in tap water and SAIW

Left: SAIW / Right: Tap water

Color of water changed immediately when soaked



Photos of water after 10 minutes

Left: SAIW / Right: Tap water

Color of water on the left (SAIW) is changed as pesticide chemical came out.

